

CUSTOM SCREEN PRINTED ELECTRODE

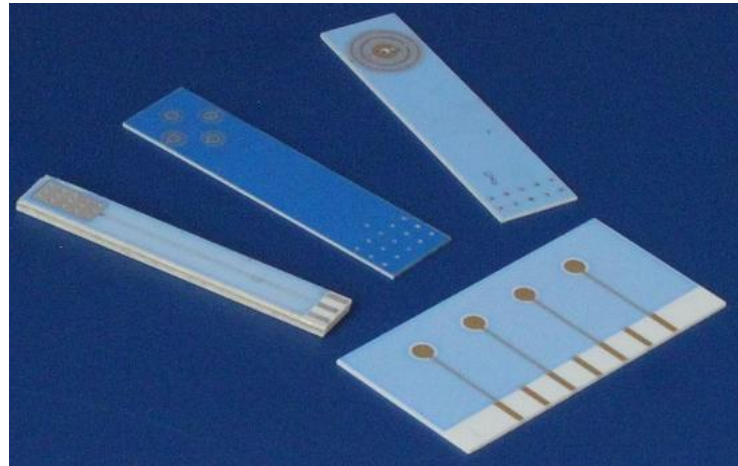
Examples of OEM products

Description

We offer our customers Custom Sensors based on their demands and needs, and we will also recommend to the customer if there is a better option for their intended purposes.

High-purity material on WE

We can provide polished working electrode or insert a high-purity material on WE (99.9% or better). The WE can be applied also by sputtering.



Materials of WE

We can offer you not only standard materials Au/Pt, Au, Pt, Ag, C but also Ni, Cu, and other materials.

Modified SPE

We can provide Modified Screen Printed Electrodes at a customers request. Examples of possible Modified SPE Surfaces are Graphine, Streptavidin, Polyaniline and High-purity Materials

Special Active Surfaces

We can provide SPEs with Special Active Surfaces using Copper (Cu), Nickle (Ni), Magnesium (Mg) and Zirconium (Zr).

Sensor/device size

The technological capabilities enable to produce device up to 150 x 1200 mm.



Immobilization

We can offer you sensor with immobilized AChE (for detection of organophosphorous and carbamate pesticides, toxic and neurotoxic gases,...), GOD (for glucose measurements), LOC (for lactate measurement)



Measurements in small volumes

We offer you AC1 with integrated microreactor (MAC) for measurements of volumes 20 µl in a closed system

Temperature sensing

AC1 is also offered with Temperature sensing element
Thermistor (must be calibrated) x **Pt 1000** (standard response)

Ordering information

- Delivery time for non-standard sensors depends on final technical specification of order