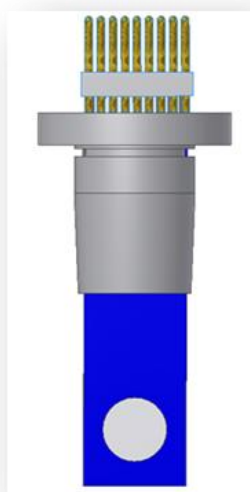


AC9C HOLDER

Type: AC9C holder



Description

Holder for AC9C electrochemical sensor with an array of 8 working electrodes and 1 common reference electrode. It is used for multi-analyte detection. Sensor holder fits in TC9 glass cell opening.

Physical Parameters

Weight: 6.8 gms

Ordering Information

- The order is specified by product code
- Minimum order quantity - 1 sensor holder
- Delivery time for AC9C holder is 4 weeks from receipt of order

Example of Order - 6 pieces - AC9C holders

